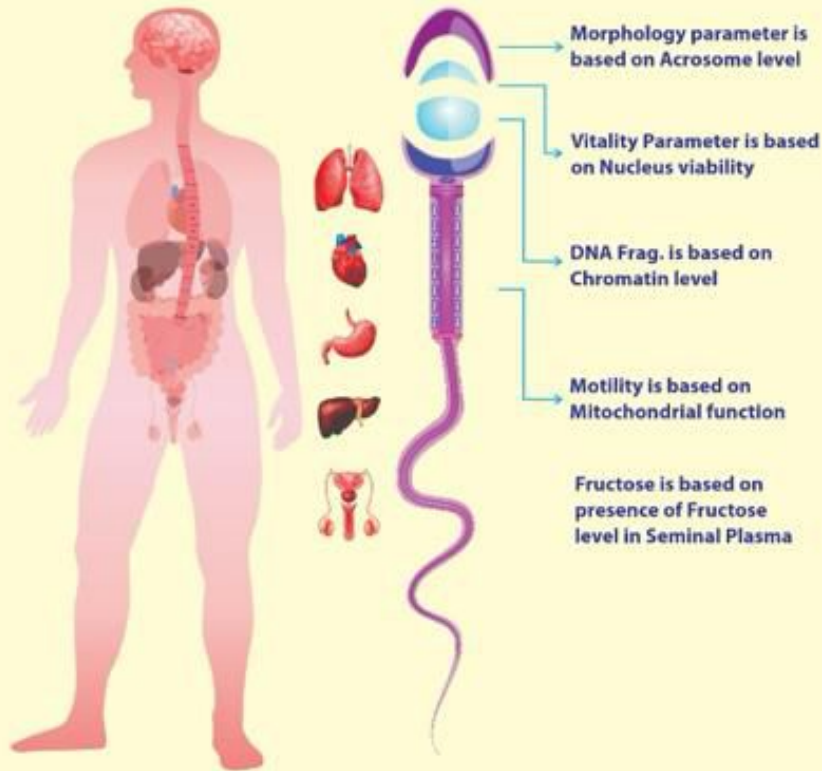


CASA DOES COMPLETE MASTER HEALTH CHECKUP IN SPERM CELL AS LIKE HUMAN ANALYSIS



Dr. Borus
Andro Lab & Research Centre

Dr. Borus
Pharma

Dr. Borus Institute
Providing knowledge in Andrology

Prime Health Care
Andrology Lab Solutions

No. 37, 1st Floor, 5th Street, Selvi Nagar, Kolathur, Chennai - 600 099.

☎ 044 2650 6316, 78719 68316 ✉ info@primehcare.com 🌐 www.primesperm.com

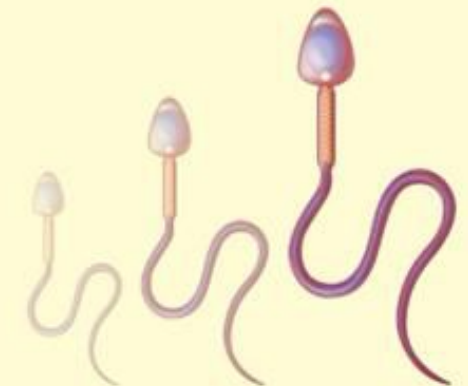


INDI-A CASA
Computer Assisted
Semen Analysis



Prime Health Care

Andrology Lab Solutions



Morphology

Motility

Vitality

DNA Fragmentation

Prime Sperm

Computer Assisted Semen Analysis

THIS SYSTEM UTILIZE MODERN ADVANCE IMAGE PROCESSING TECHNIQUES

✓ Sperm motility ✓ Morphology ✓ Vitality ✓ DNA Fragmentation

Based on the sperm test standards of the WHO criteria

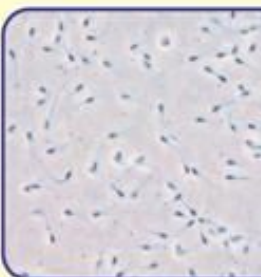
SPERM MOTILITY COUNT CONCENTRATION

It is designed to estimate the sperm concentration and their motility in a native specimen and determines sperm concentration in million / mL.

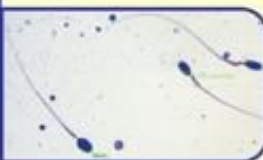
Measuring sperm movement parameters and classify this movement to classes in accordance of WHO recommendations.

Ability to exclude round cells for more accurate calculated parameters and count.

The software calculates sperm dynamic parameters (VCL / VSL / VAP / MAD / ALH / BCF / LIN / WOB / STR)



MORPHOLOGY



It Determines the Morphological parameters of sperm.

Head Defects: Tapered, Pyriform, Round no Acrosome, Amorphous 1, 2 & 3, Vaculated, Small Acrosome, Double Headed, Pin Head,

Neck Defects: Bent Neck, Asymmetrical, Thick Insertion, Thin.

Tail Defects: Short, Bent, Coiled, Double Tail.

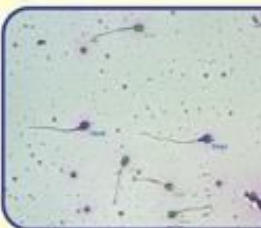
ERC

VITALITY

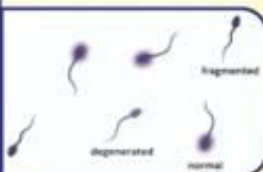
This test is important to determine whether if the non-motile sperms are alive/dead.

It should be assessed if a low percentage of sperm are progressively motile, e.g., 30-40%

The procedure has follows as per WHO norms



DNA FRAGMENTATION



Sperm DNA integrity that may help to identify men who are at risk of failing to initiate a healthy ongoing pregnancy.

Helps in the treatment of male infertility and may be of prognostic value in assessing outcome of assisted conception treatment.

SLIDE IMMERSION TRAY

For perfect cell lysing in the coated semen sample slide.
For immerse Lyse 1, Lyse 2 and DI water.

Specially made for DNA fragmentation assay procedure.



SEMEN SAMPLE INCUBATOR & DNA WARMER



For Incubate the Semen samples in the temperature of 37°C and helps to liquify the Semen samples.

We can able to adjust the temperature from 1°C to 70°C.

SLIDE WARMER

To dry the stained slides while preparing the Morphology, Vitality and DNA fragmentation specimens.

We can able to adjust the temperature from 1°C to 70°C.

